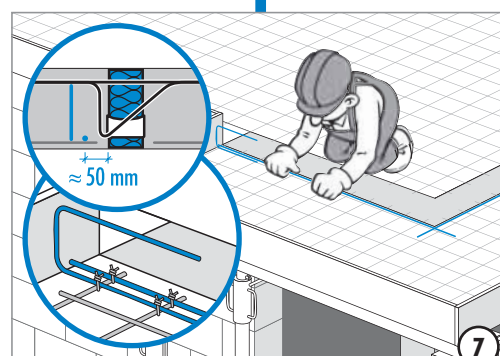
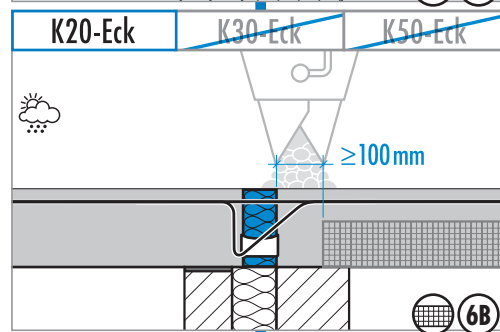
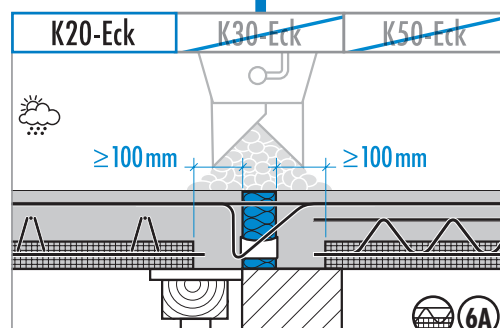
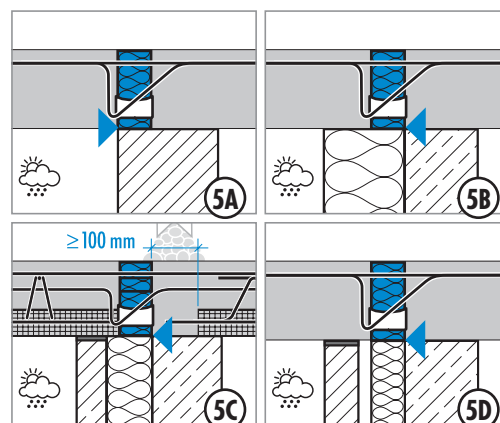
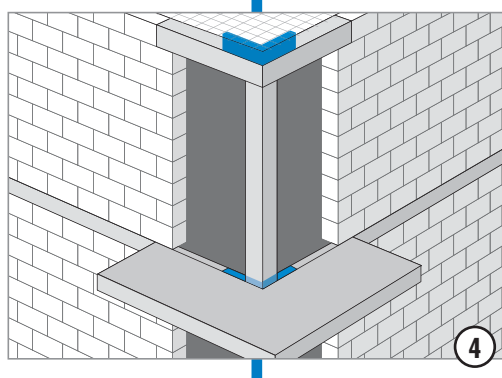
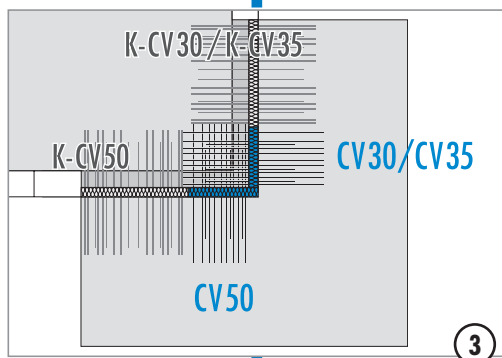
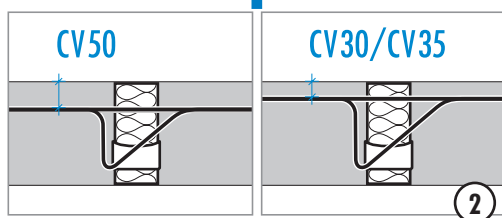
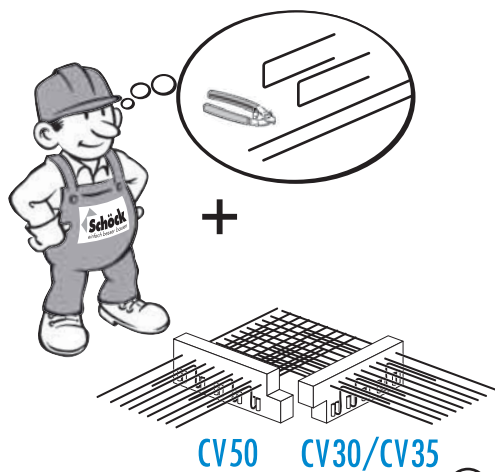


SCHÖCK ISOKORB® TYPE K-CORNER

Installation instructions



K-corner

Reinforced concrete-to-reinforced concrete

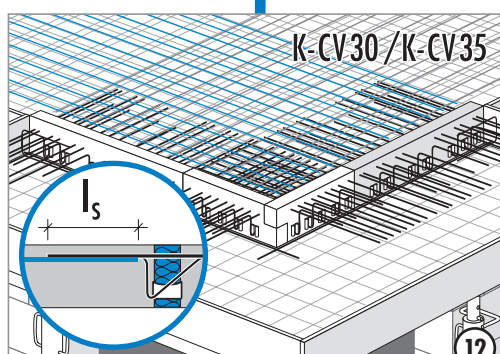
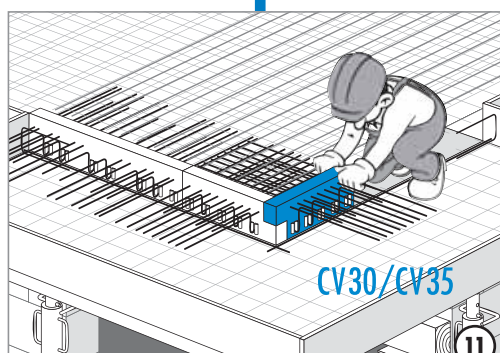
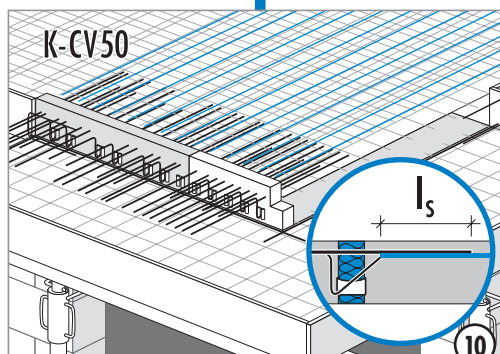
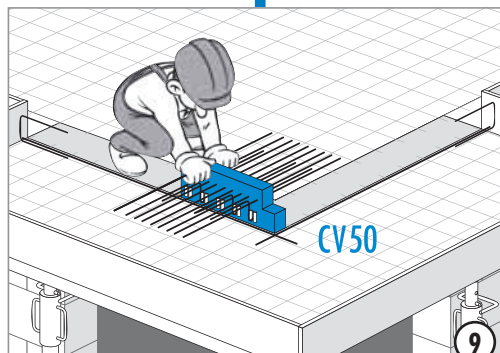
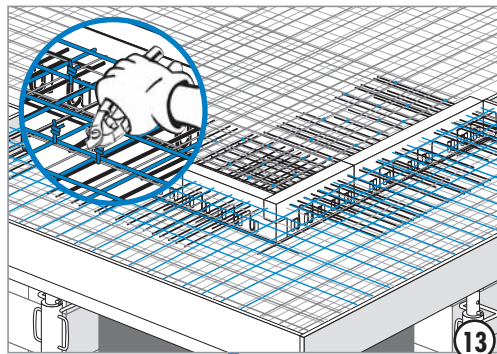
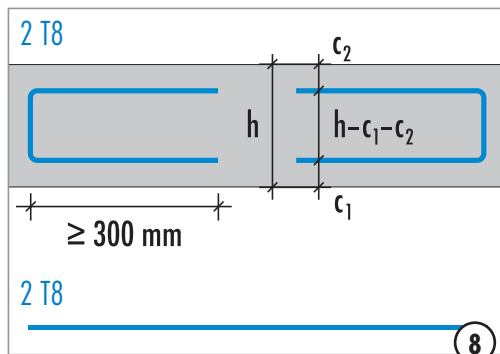
SCHÖCK ISOKORB® TYPE K-CORNER



Installation instructions/Notes

K-corner

Reinforced concrete-to-reinforced concrete



Notes

- Concrete strength class for outside components at least C32/40 (see page 32).
- Reinforcement joints according to the information provided by the structural design engineer.
- In order to secure the position of the Schöck Isokorb® during concreting, it is important that both sides are evenly filled and compacted.
- Precamber of the balcony slab and concrete cover in accordance with the information provided by the structural design engineer or the construction management.
- Refer to page 50 for details of the maximum expansion joint spacing.
- The lateral force load bearing capacity of the slabs at the limits of load-bearing capacity is to be limited to $0.3 V_{Rd, max}$, whereby $V_{Rd, max}$ should be determined according to BS EN 1992-1-1, equation (6.9), for $\theta = 45^\circ$ and $\alpha = 90^\circ$.