

Schöck Isokorb® type A

Alignment of elements/cross-section/perm. section measurements

Dimensions

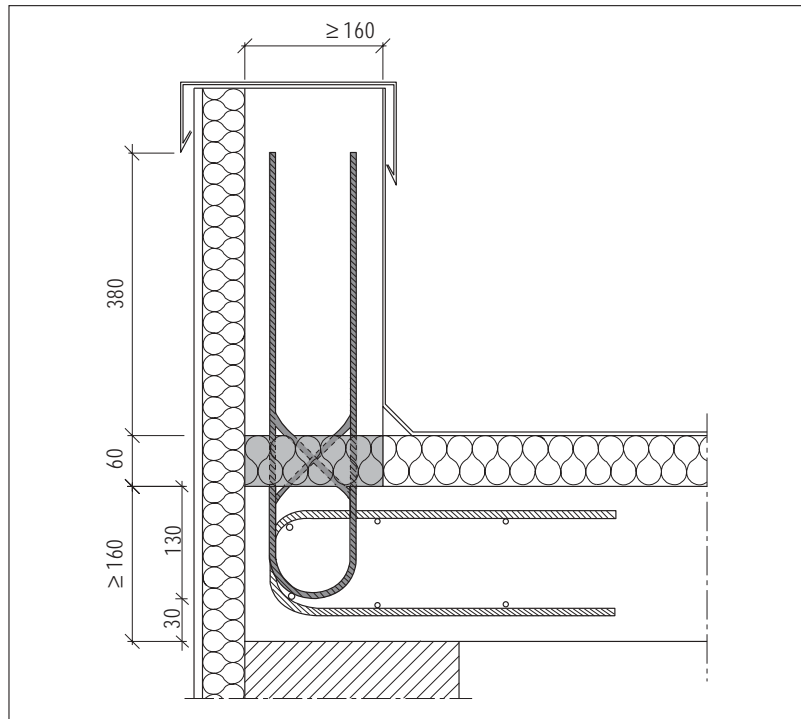
Width of element	16 - 25 cm
Length of element	35 cm
Insulation material thickness	6 cm

Reinforcement

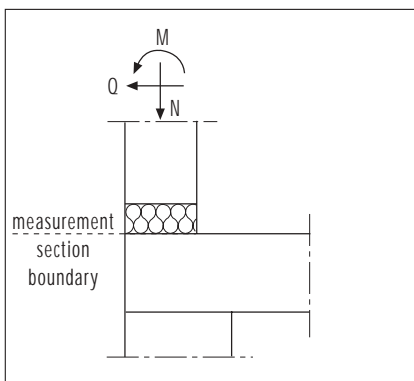
Tensile rods	2 x 3 \varnothing 8 mm
Shear force rods	2 x 2 \varnothing 6 mm

Perm. section measurements

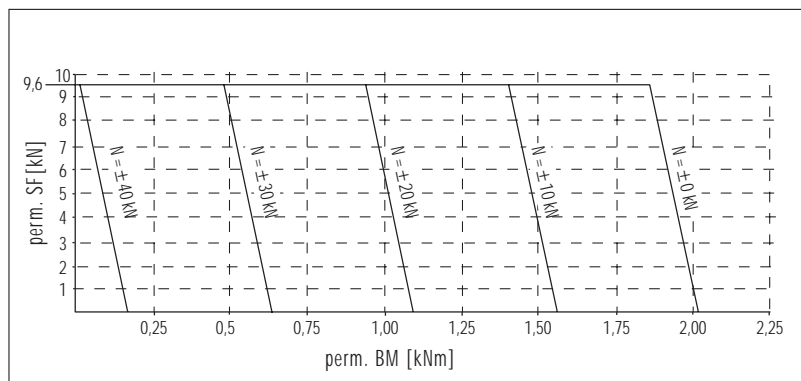
perm. SF = 9,6 kN per Element
 perm. BM see interaction diagram



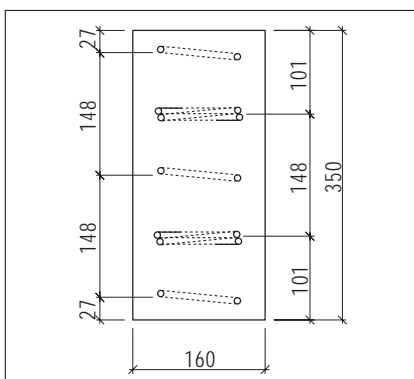
Cross-section parapet construction



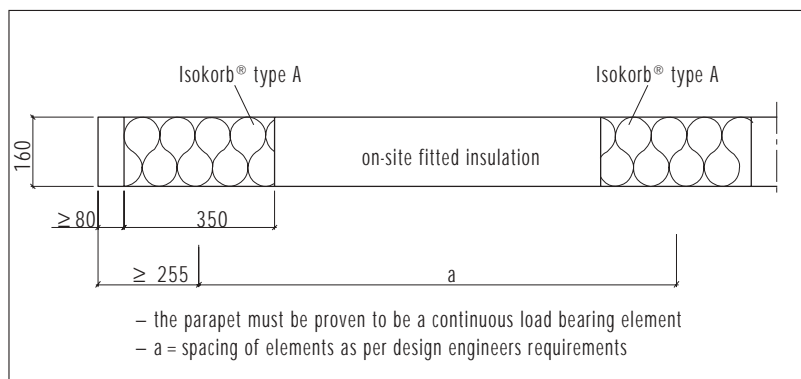
Static design system



Interaction diagram for Schöck Isokorb® type A



Plan view



Element spacing

- the parapet must be proven to be a continuous load bearing element
- a = spacing of elements as per design engineers requirements