

Schöck Isokorb® type F

Alignment of elements/cross-section/perm. section measurements

Dimensions

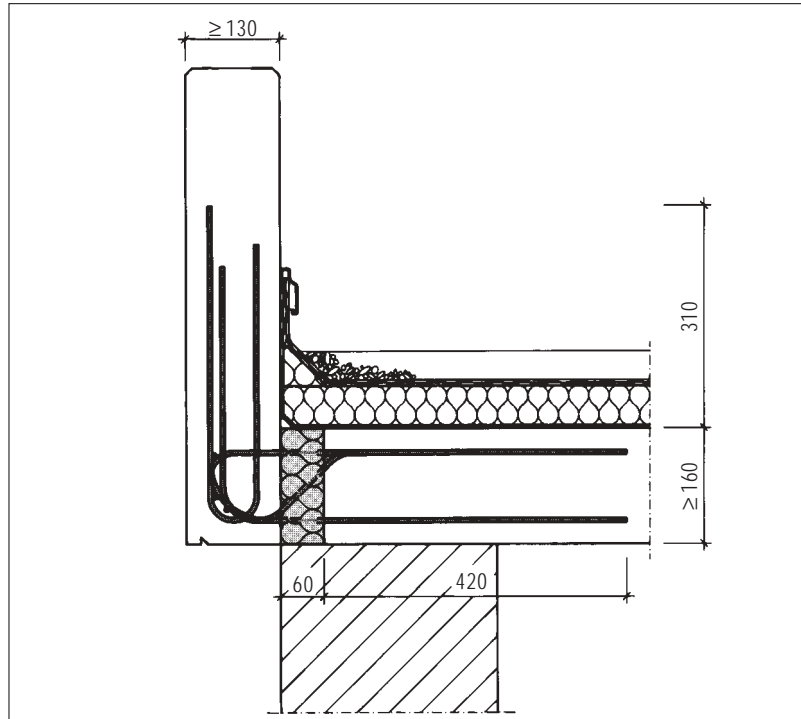
Height of element	16 - 25 cm
Length of element	35 cm
Insulation material thickness	6 cm

Reinforcement

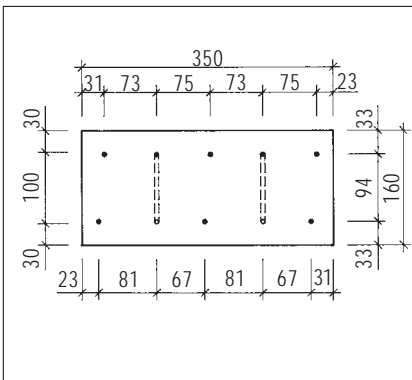
Tensile rods	3 \varnothing 6 mm
Thrust rods	3 \varnothing 6 mm
Shear force rods	2 \varnothing 6 mm

Perm. section measurements

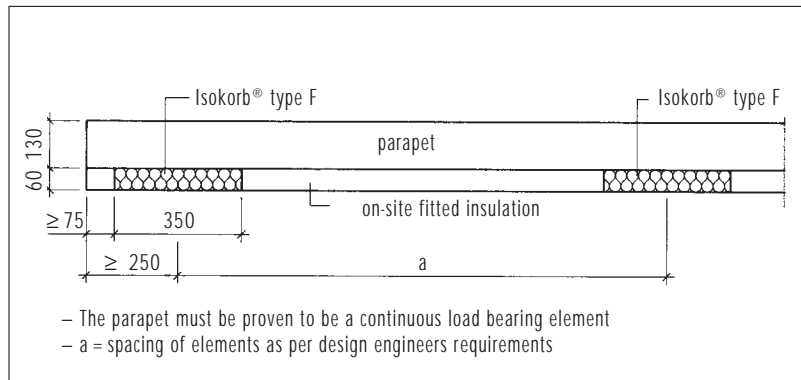
perm. SF = 9,6 kN per Element
 max. BM = 1,2 kNm per Element



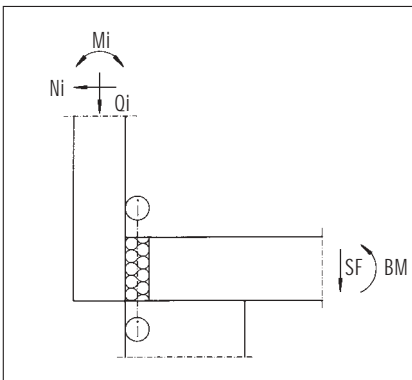
Cross-section parapet construction



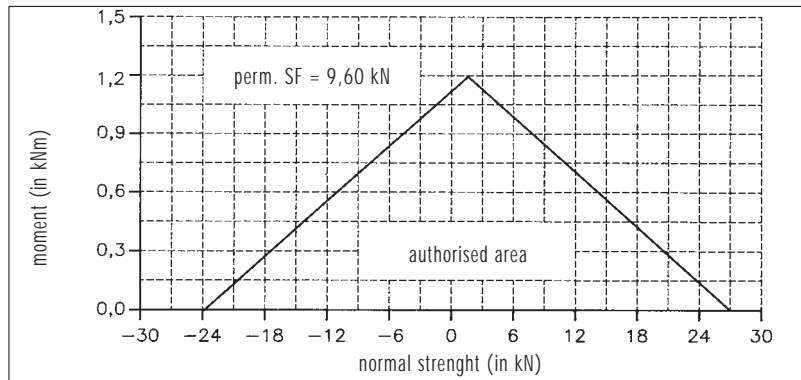
Face elevation



Element spacing



Static design system



inter-reaction diagram for the Schöck Isokorb® type F