

Schöck Isokorb® type 0

Alignment of elements/cross-sections/perm. section forces

Dimensions

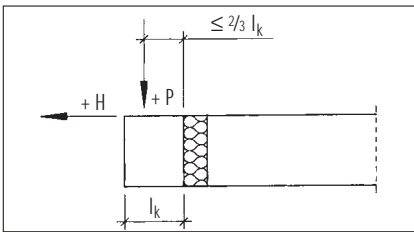
Height of element	18 - 25 cm
Length of element	35 cm
Insulation material thickness	6 cm

Reinforcement

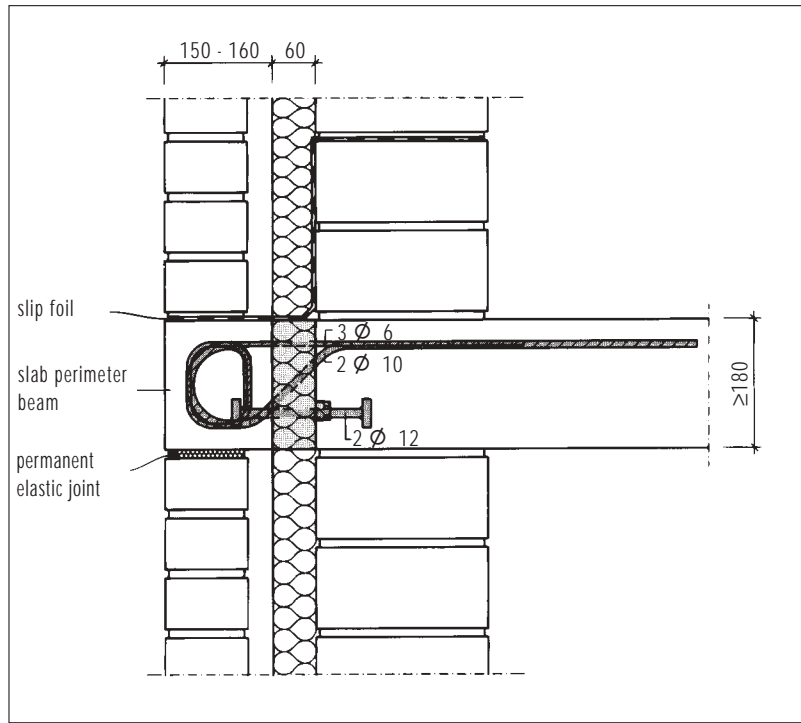
Tensile rods	3 ϕ 6 mm
Thrust bearing	2 ϕ 12 mm
Shear force rods	2 ϕ 10 mm

Perm. section forces

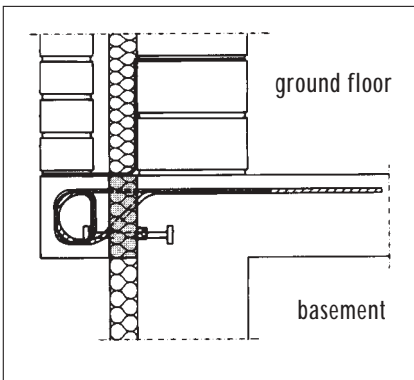
perm. P = (38,5 - H) x 9,7/25,17
 max. H = 13,5 kN/Element
 for H = 0 → perm. P = 14,84 kN/Element



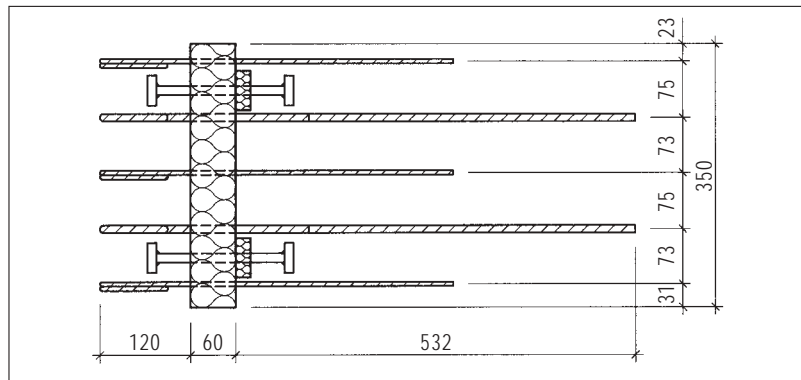
Static system



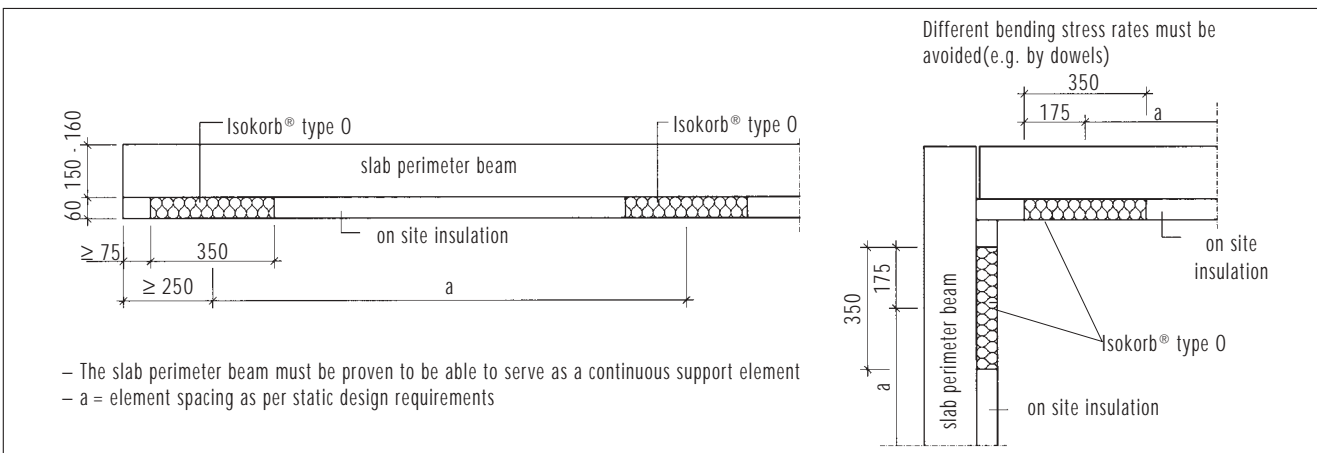
Cross-section slab corbel



Cross-section slab corbel at basement wall



Plan view Schöck Isokorb® type 0



Element spacing